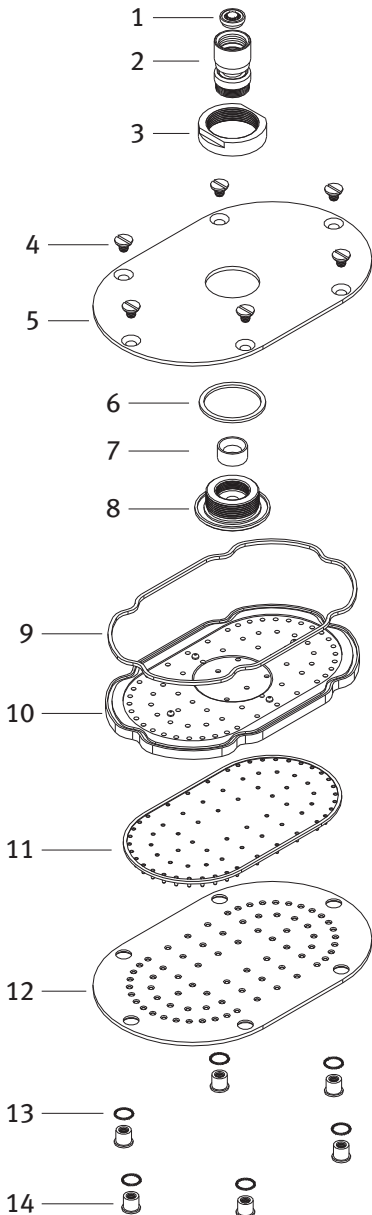


No.	Clasif.	Descripción	No.	Clasif.	Description
1	Sr-080	Economizador E-9	1	Sr-080	E-9 Economizer
2	Sr-044	Nudo Armado para H-400	2	Sr-044	H-400 Armed Coupling
3	Rr-361	Casquillo Regadera	3	Rr-361	Shower Head Bush
4	Rr-363	Tornillo 1/4"-20 x 3/8"	4	Rr-363	1/4"-20 x 3/8" Screw
5	Rr-495	Tapa Superior Regadera Premier	5	Rr-495	Top Plate Showerhead
6	Rr-362	Empaque para Inserto	6	Rr-362	Washer Insert
7	Rr-047	Empaque para Nudo	7	Rr-047	Washer Coupling
8	Rr-360	Inserto de Regadera	8	Rr-360	Showerhead Insert
9	Rr-499	Empaque para Regadera Premier	9	Rr-499	Showerhead Washer
10	Rr-497	Difusor Transparente p/Regadera Premier	10	Rr-497	Transparent Diffuser
11	Rr-496	Tapete con Anticalcáreos para Regadera	11	Rr-496	Antitime Cover
12	Rr-498	Tapa Frontal de Regadera Premier	12	Rr-498	Premier Front Plate
13	Rr-421	Rondana Dentada	13	Rr-421	Front Washer
14	Rr-410	Tuerca Ciega de Regadera	14	Rr-410	Showerhead Blind Nut



**Características:**  
 Regadera de baja, media  
 y alta presión  
 Economizador Dinámico  
 de Agua Incluido

**Features:**  
 Low, Medium and High Pressure  
 Showerhead  
 Dynamic Water  
 Economizer included

**Datos Técnicos:**  
 Material:  
 Latón

**Technical Information:**  
 Material:  
 Brass

**Conexión:**  
 1/2"-14 Npt

**Fitting:**  
 1/2"- 14 Npt

**Gasto Mínimo:**  
 4lts/min (1,05 Gmp)

**Min. Water Flow:**  
 4 lts/min (1.05 Gmp)

**Gasto Máximo:**  
 10lts/min (2,64 Gmp)

**Max. Water Flow:**  
 10 lts/min (2.64 Gmp)

**Presión de Trabajo:**  
 Pmin = 0.2 Kg/cm<sup>2</sup>  
 [2.85 Psi]  
 Pmax = 6.0 Kg/cm<sup>2</sup>  
 [85.34 Psi]

**Working Pressure:**  
 Pmin = 0.2 Kg/cm<sup>2</sup>  
 [2.85 Psi]  
 Pmax = 6.0 Kg/cm<sup>2</sup>  
 [85.34 Psi]